

FOLKLORE & MYTHOLOGY

FALL 2016

mcl.as.uky.edu/folklore-mythology

UKC 100: Folk and Traditional Arts

TR 12:30-1:45 (Sharp - ethan.sharp@uky.edu)

Inquiry: Arts & Creativity requirement

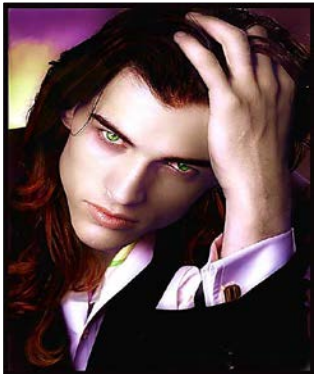
In this course, students will learn about and engage the creative processes involved in the preservation and valorization of folk and traditional arts. Students will interact with traditional artists, document the production or performance of a traditional art form, and work independently toward the creation of a digital "artifact"—such as a blog, edited video or storyboard. The projects will experiment with uses of digital media for the display and interpretation of traditional arts, which include traditional needlework, woodworking, storytelling, music and many other art forms.



CLA 135: GREEK AND ROMAN MYTHOLOGY

TR 11:00-12:15 (Francis - j.francis@uky.edu)

Inquiry: Humanities requirement



MCL 135: Vampires - Evolution of a Sexy Monster

TR 2:00-3:15 (Rouhier - j.rouhier@uky.edu)

Inquiry: Humanities requirement or Inquiry: Social Science requirement

What is a vampire? Where do they come from? How do we get rid of them (or attract them)? We will explore the origin of the vampire in folklore and trace the movement of the legend across Europe into literature and then finally into today's films and pulp fiction. We will learn about the legends, rituals and vernacular religious beliefs associated with the vampire phenomenon and how they have been interpreted over the centuries. We will discover the myriad of approaches to the vampire from psychology, folkloristics, literature, physiology and anthropology.

HON 151-002: THE TROJAN WAR FOR AMERICANS

MWF 10:00-10:50 (Murray - jackie.murray@uky.edu)

Honors Program Inquiry: Humanities requirement

CLA 331: GENDER & SEXUALITY IN ANTIQUITY

TR 2:00-3:15 (Francis - j.francis@uky.edu)

MCL 270: INTRODUCTION TO FOLKLORE AND MYTHOLOGY

MWF 11:00-11:50 (Sharp - ethan.sharp@uky.edu)

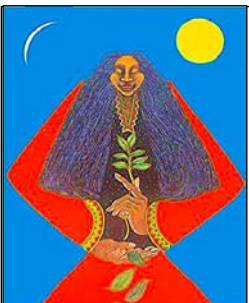
FR 324: Studies in French Literature: WRITING WOMEN IN THE MIDDLE AGES

TR 2:00-3:15 (Human - Julie.human@uky.edu) *in French*

CHI 430/ 495G: Chinese Folklore in Popular Culture

MW 2:00-3:15 (Luo - liang.luo@uky.edu)

This course studies the following seminal folktales from Chinese culture: Mulan, White Snake, Meng Jiangnü, Weaving Maiden, Mulian and Woman Huang, and Butterfly Lovers. These tales have not only been central to traditional culture in China, but have been reinterpreted in film, literature, drama, and opera in China, Japan, the United States. We will examine the formations and transformations of these tales in various forms throughout the cultural history of China.



MCL 595: Topics in Folklore & Mythology – HEALING

W 3:30-6:00 (Sharp - ethan.sharp@uky.edu)

This course will explore perspectives on illness, healers and healing practices from within the discipline of folklore studies. Topics will include, but not be limited to, Mexican American *curanderos*, spirit possession in the African diaspora, Chinese traditional medicine, and twelve-step programs for alcoholism. Students will conduct independent research about an aspect or kind of folk healing that they are interested in.